

# Dorel Final Presentation



Media console choices are driven by technology purchases and upgrades.



The coffee table is an essential piece of furniture for daily activities, serving as a workspace and a dining surface for those who prefer sitting on the floor.



Furniture pieces are hidden away due to the absence of closed storage, which leaves clutter visible.



For social gatherings, the coffee table is put away to create more space.

## Interview Insights



## Sketches





Modular Media



Triangles



Puzzle

Initial Concepts

One SKU can consist of a main cabinet and a side cabinet,  
or the customer can purchase one cabinet at a time.

A 65" TV will fit on two main cabinets as pictured.




Modular Media



Wire management holes fit all plugs  
and functions as a design element.

Modular Media

A close-up, low-angle shot of a dark-stained wooden modular media cabinet. The image highlights the smooth, curved knife-edge handles integrated into the design of the drawers and cabinet doors. The wood grain is clearly visible, and the lighting creates soft shadows that emphasize the clean lines and minimalist aesthetic of the furniture.

Knife-edge handles on both drawers  
and cabinet doors.

**Modular Media**





Modular Media

Customer can tailor the position of  
the cabinets according to their  
preferences or space.



 Audiophile Friendly

A record player can fit on top of one cabinet and one side cabinet is large enough to store vinyl records.



Modular Media

## Potential Configurations



Normal

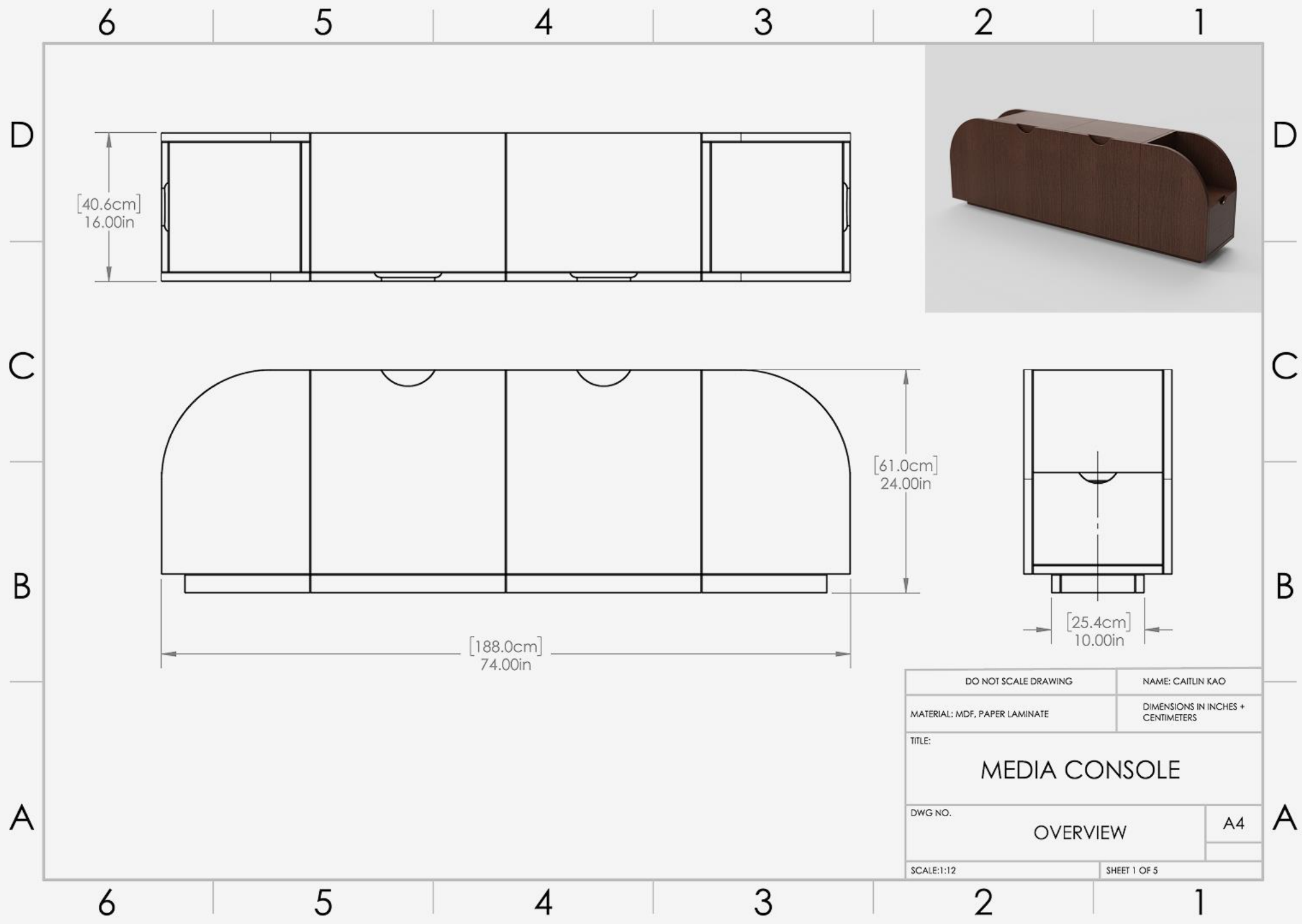


One Turned

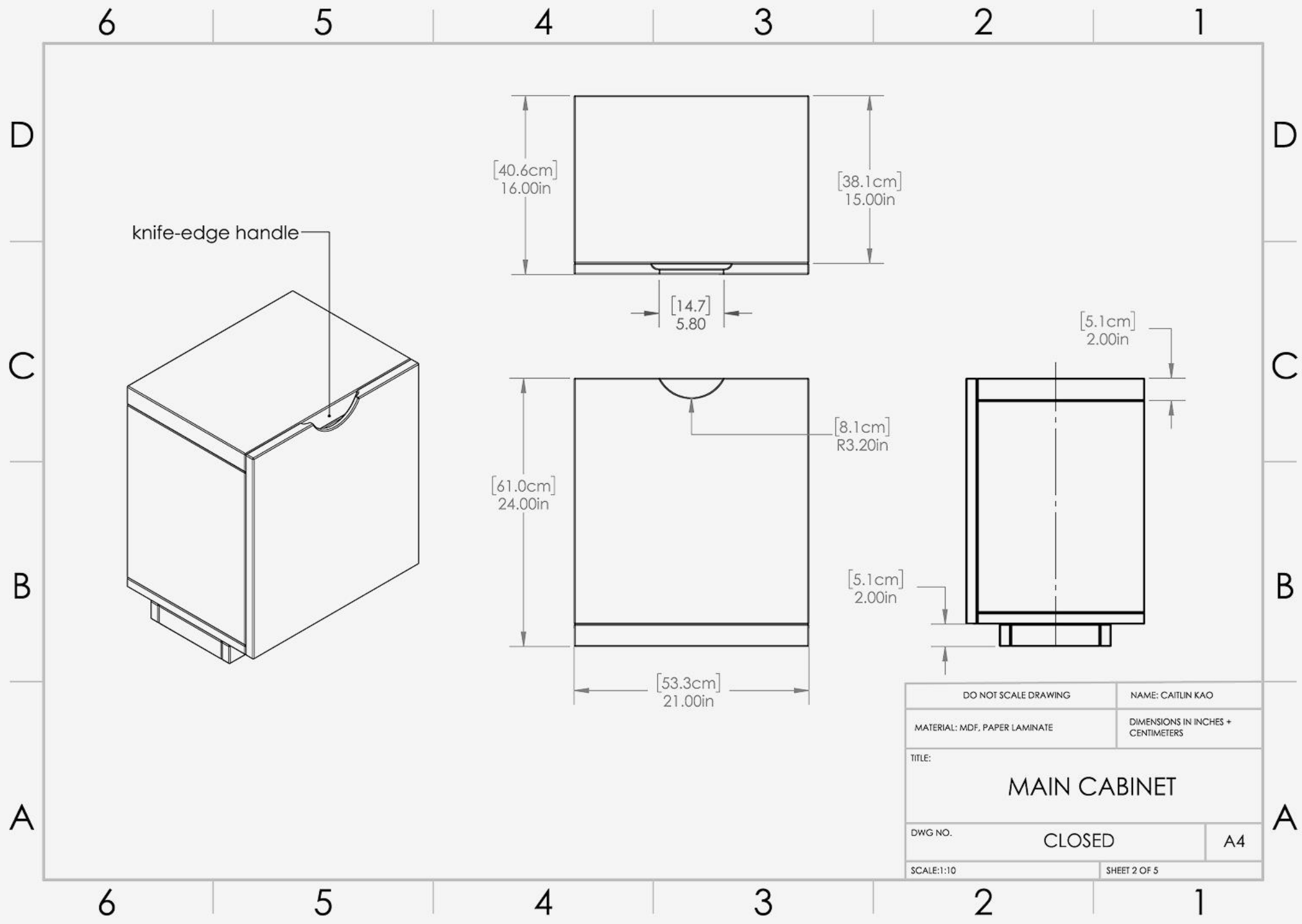


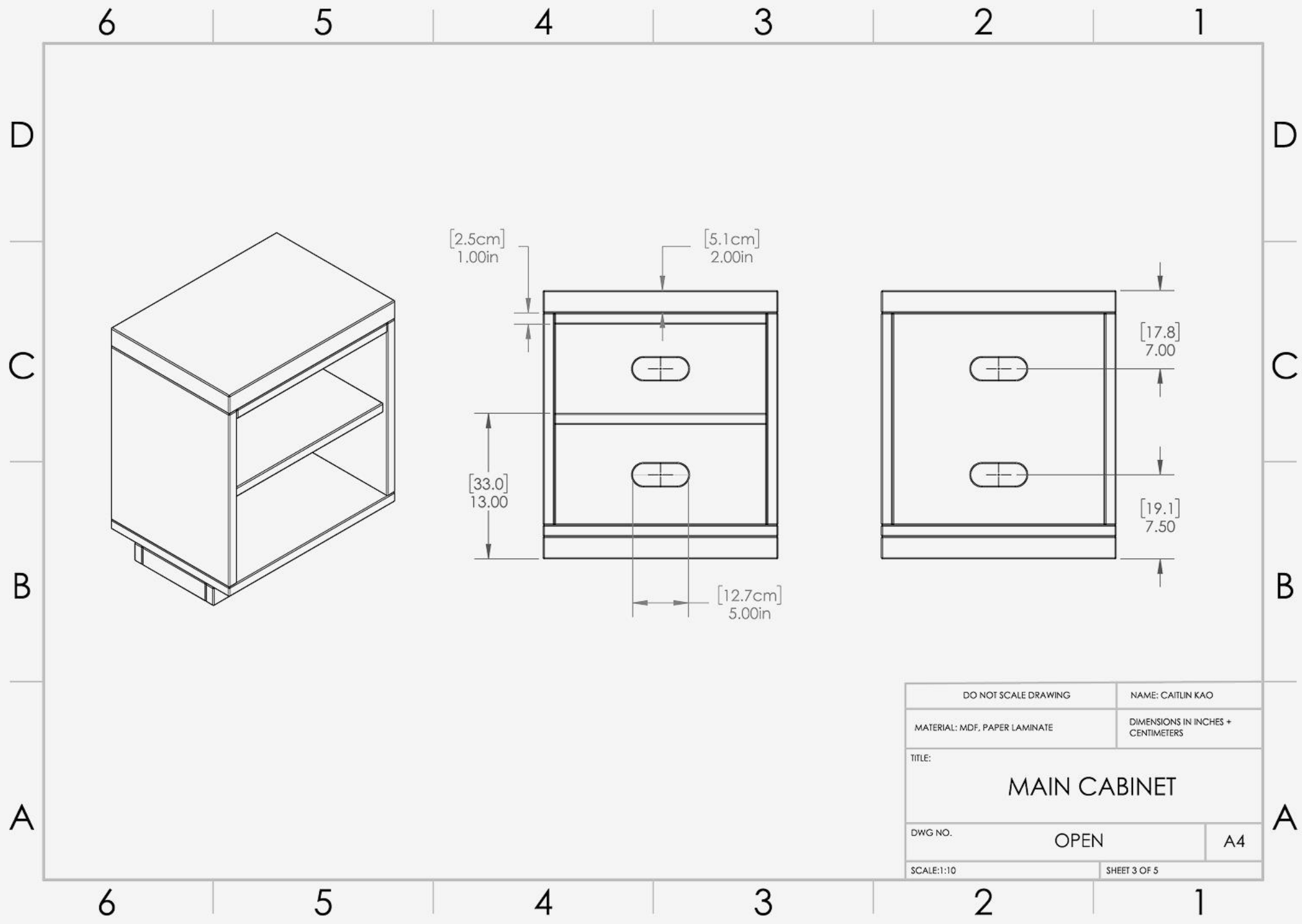
Both Turned

Media Console

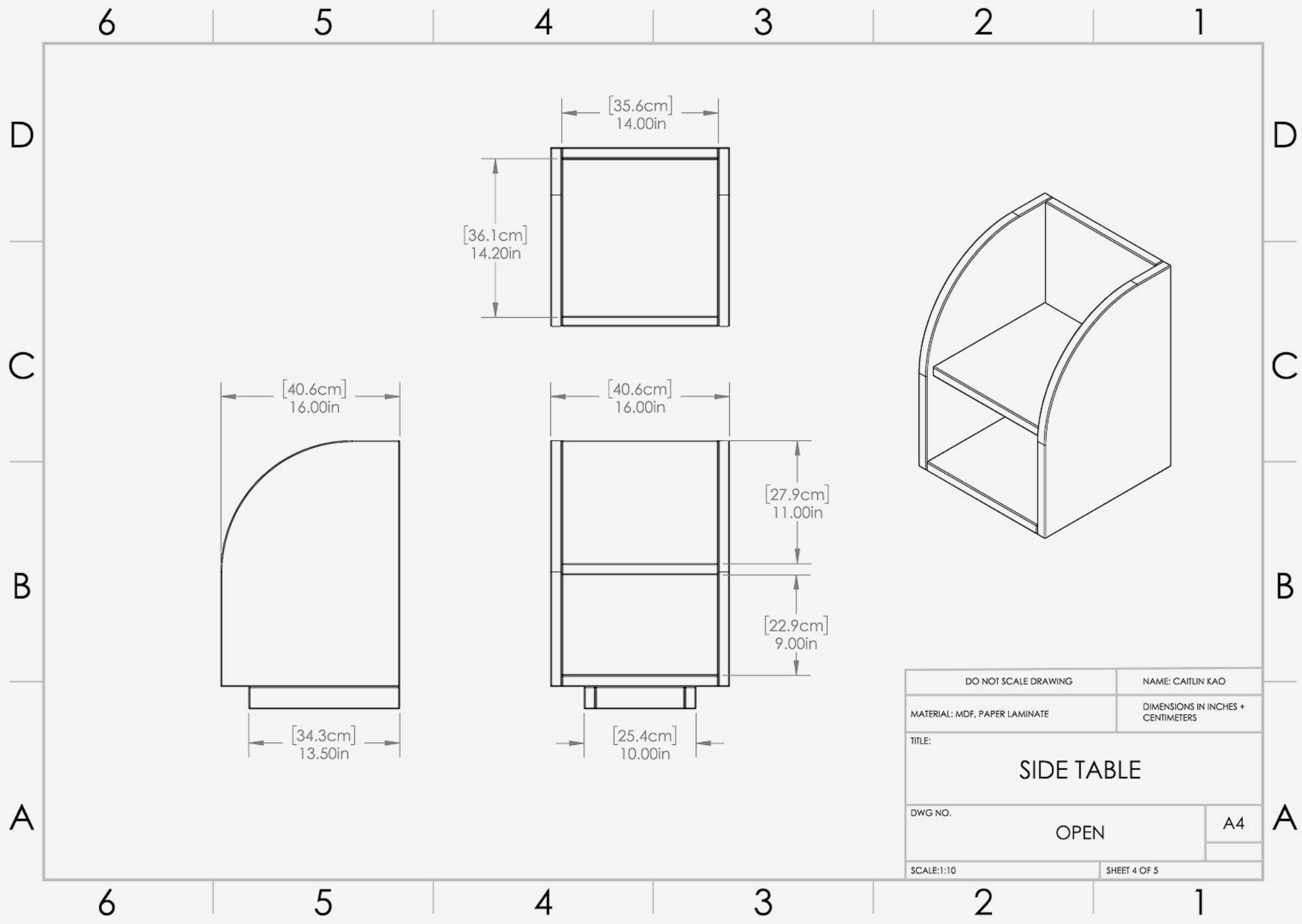




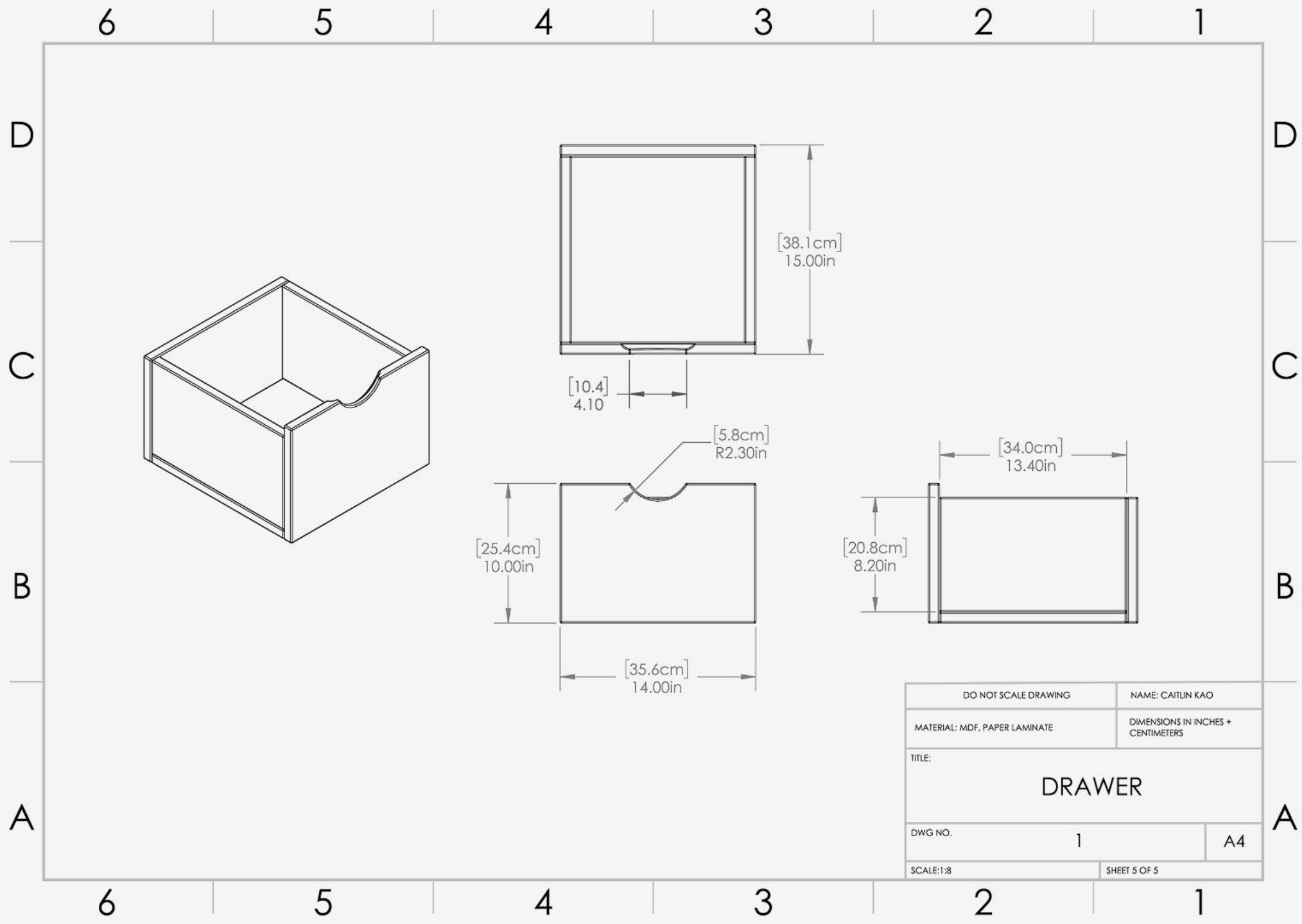


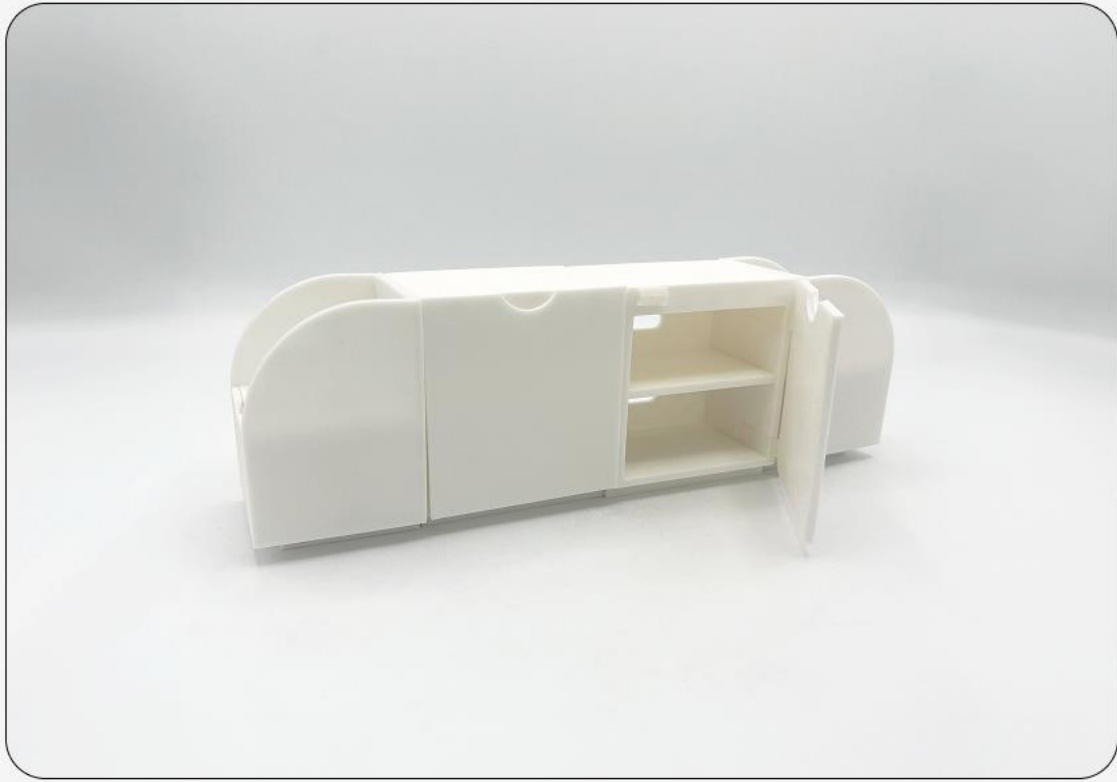


|                               |                                    |
|-------------------------------|------------------------------------|
| DO NOT SCALE DRAWING          | NAME: CAITLIN KAO                  |
| MATERIAL: MDF, PAPER LAMINATE | DIMENSIONS IN INCHES + CENTIMETERS |
| TITLE:<br>MAIN CABINET        |                                    |
| DWG NO.                       | OPEN                               |
| SCALE: 1:10                   | SHEET 3 OF 5                       |





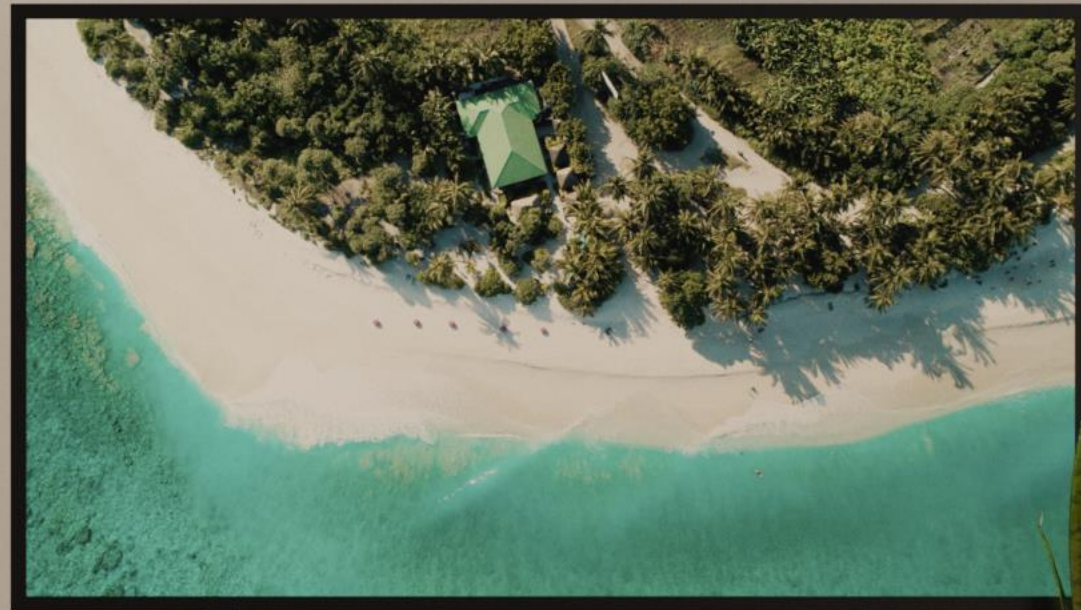




Scale Model



At Home





At Home



A colorful and playful approach to CMF exploration, with emphasis on surprising pops of color to keep things fresh.



## Triangles – Exploration



Inspiration



A petite coffee table meant for smaller living spaces.

Different types of storage depending on the customer's configuration of the triangle pieces.



# Triangles





Customer can rearrange the coffee table to accommodate more guests or give themselves more room.



Triangles

## Potential Configurations



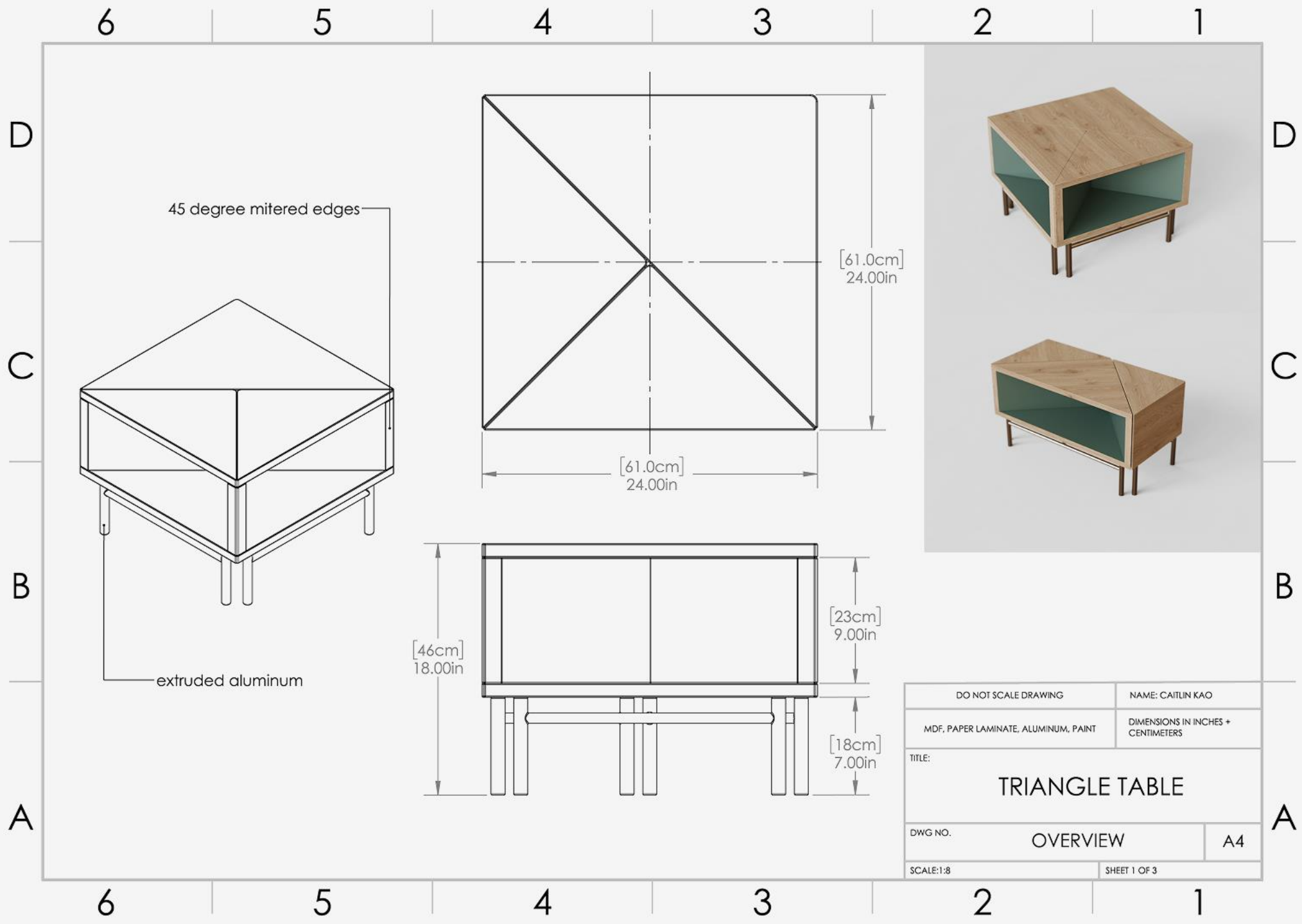
Triangles

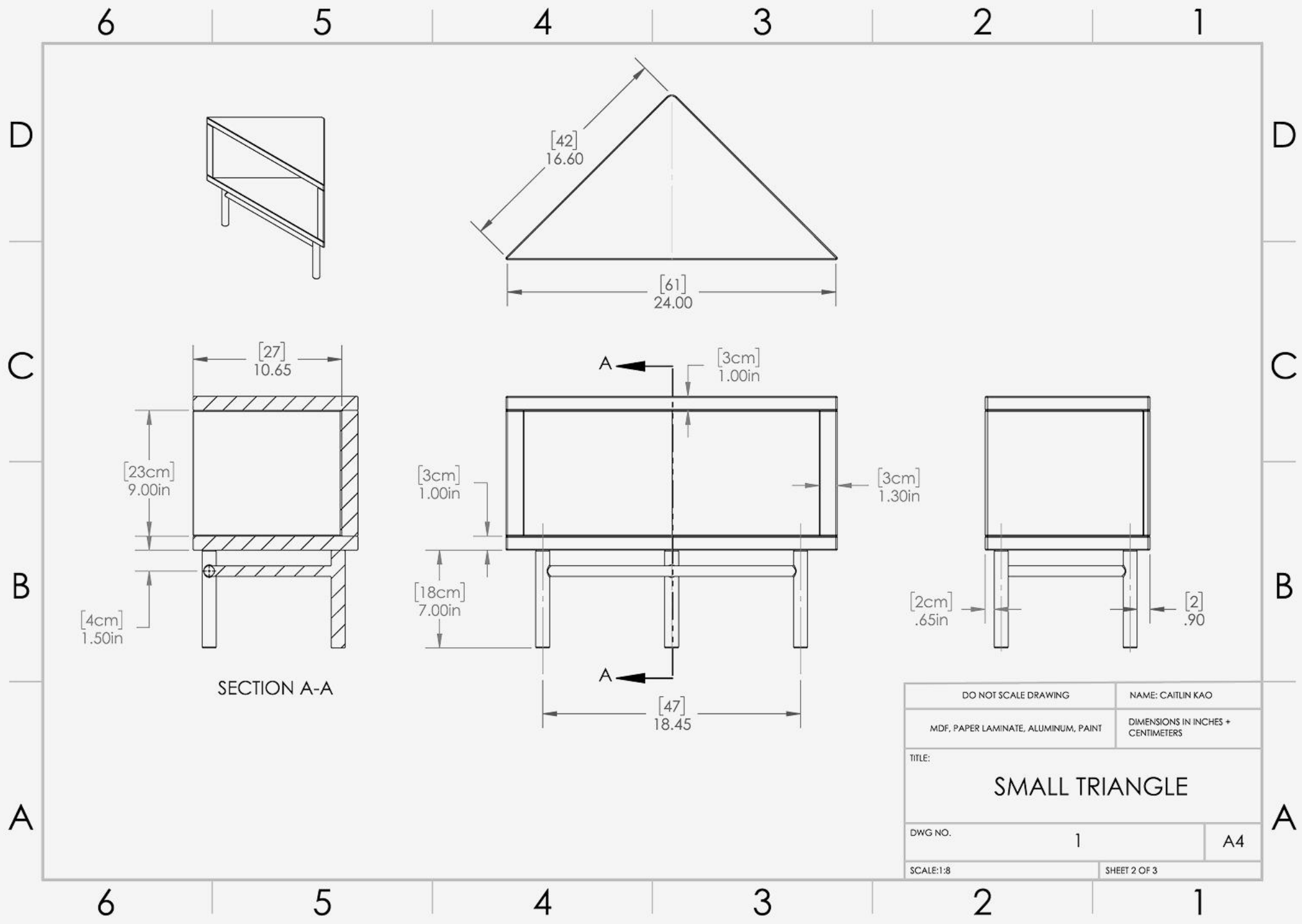
A range of colors enables customers to fully customize  
their space - mixing or matching as they see fit.



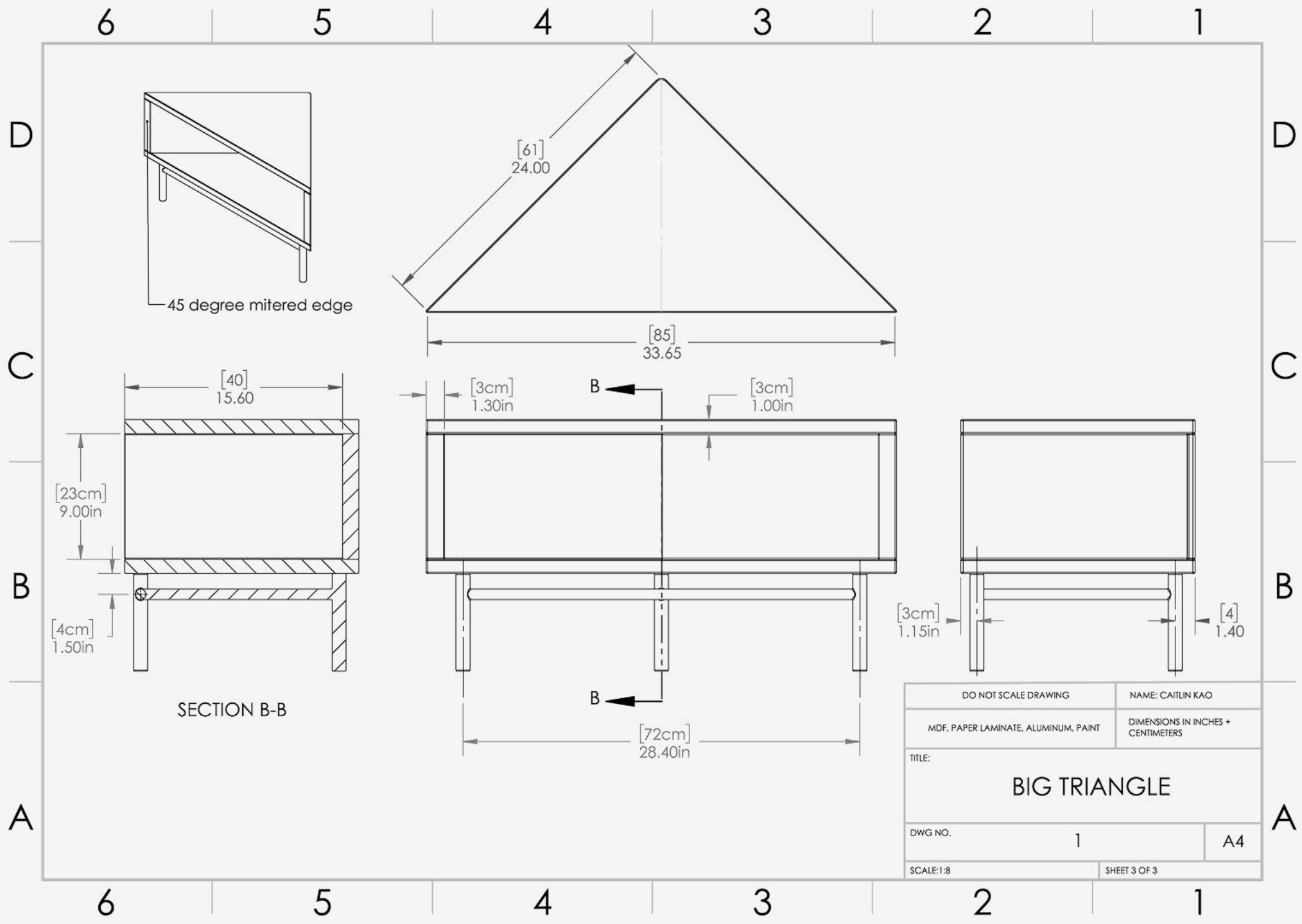
Triangles











|                                      |                                    |              |  |
|--------------------------------------|------------------------------------|--------------|--|
| DO NOT SCALE DRAWING                 | NAME: CAITLIN KAO                  |              |  |
| MDF, PAPER LAMINATE, ALUMINUM, PAINT | DIMENSIONS IN INCHES + CENTIMETERS |              |  |
| TITLE:<br><br>BIG TRIANGLE           |                                    |              |  |
| DWG NO.                              | 1                                  | A4           |  |
| SCALE: 1:8                           |                                    | SHEET 3 OF 3 |  |



Scale Model



At Home





Thank You