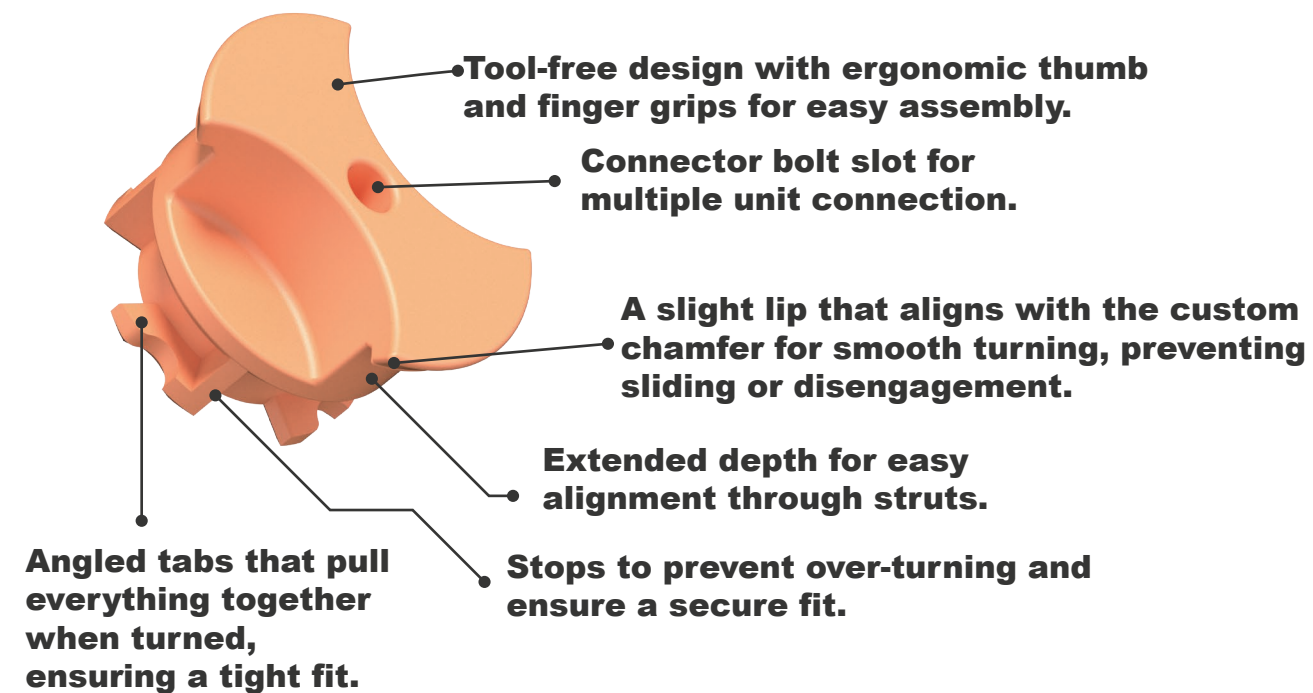
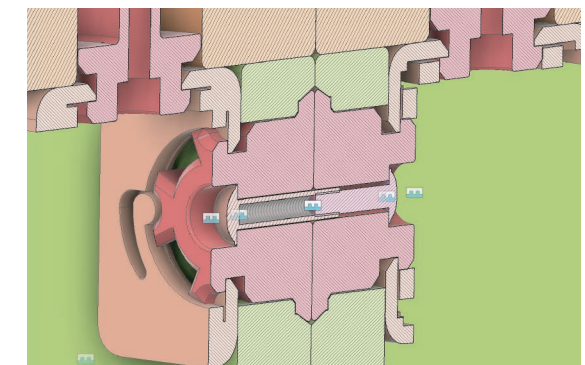
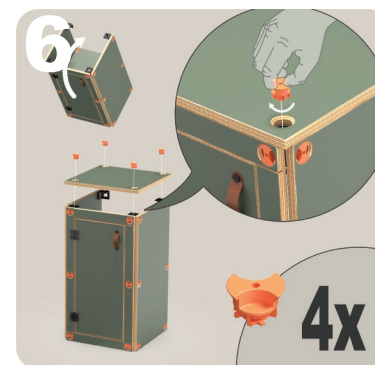
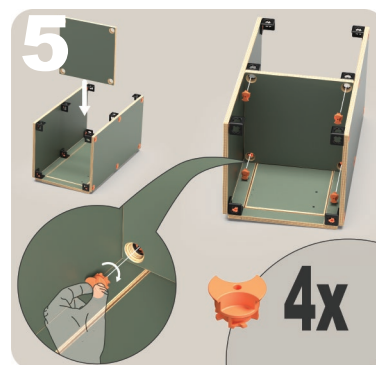
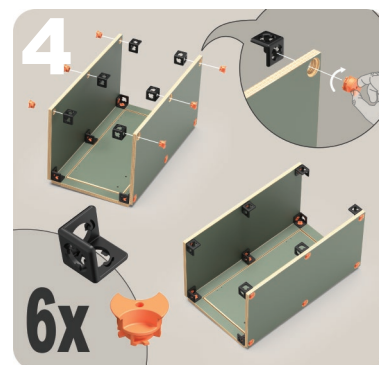
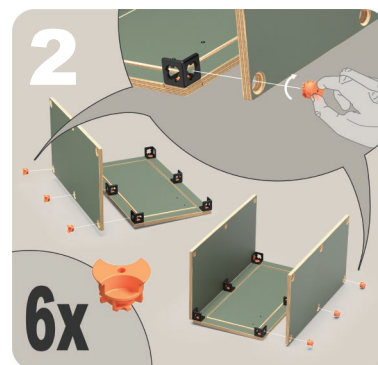
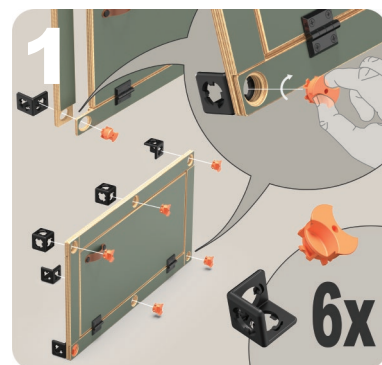
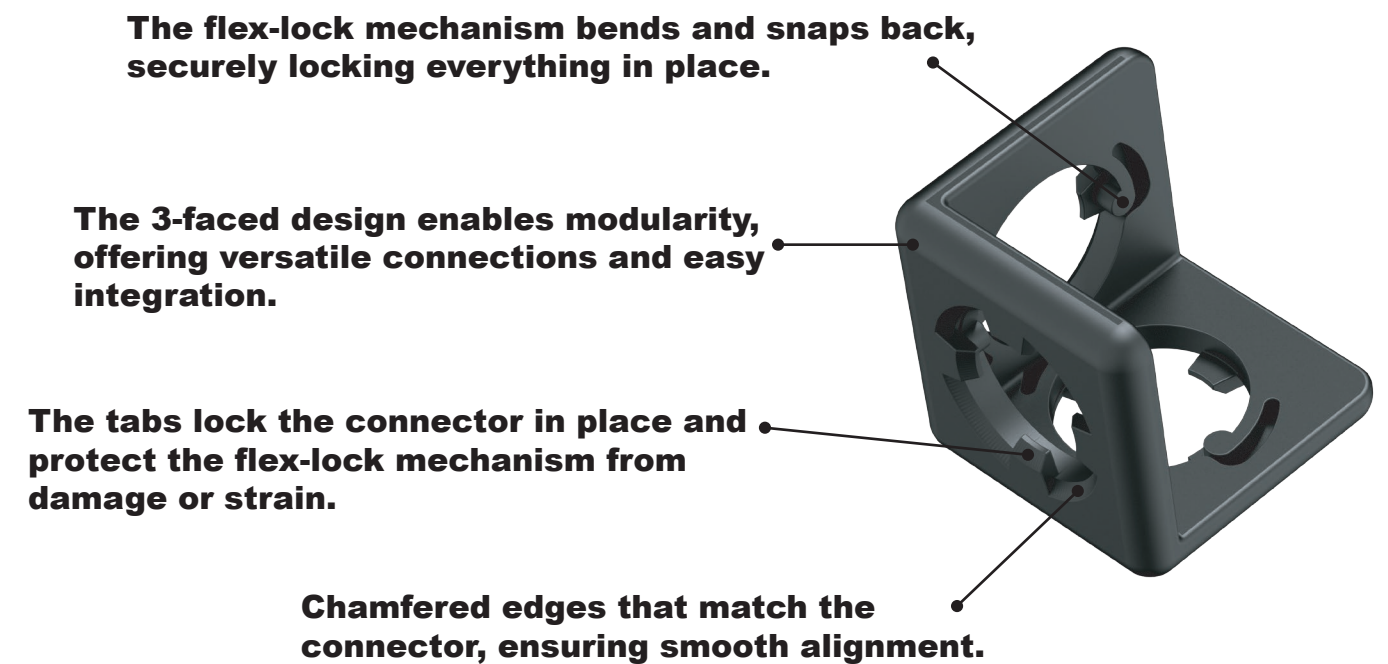


Product/Furniture Design Detail + Assembly

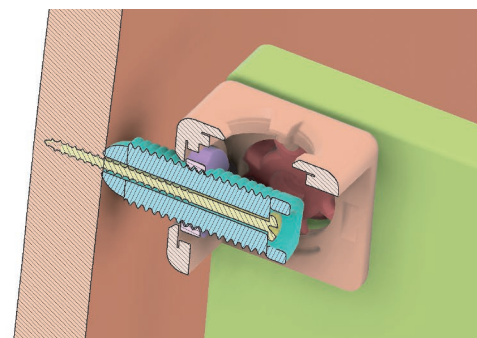
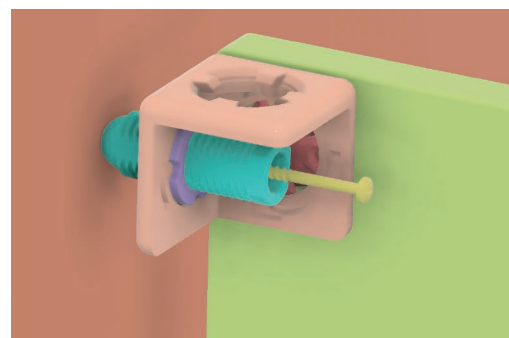
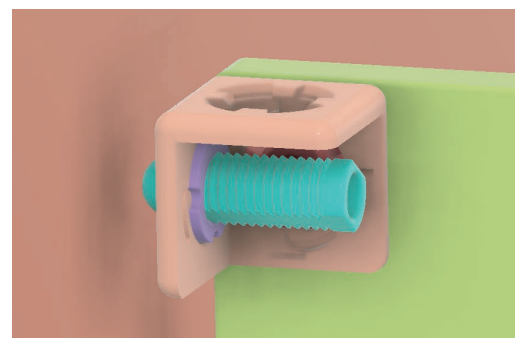
Connector / MALE Part



Receiver / FEMALE Part



Screw the threaded cylinder through the back receiver until it makes firm contact with the wall. Then drive a screw through the center of the cylinder into the wall. This bridges any gap between the furniture and the wall, providing a tight, secure fixing and preventing wobble or tipping.



Join multiple units by using bolt connectors go through special holes in the male connector parts on the side of each cabinet.

The countersink is specifically designed to mirror the shape of the male connector, ensuring a snug fit that prevents movement and allows for smooth, effortless turning during assembly.

Struts have tenons on both ends, so they can connect in any direction—up, down, left, or right—making it easy to build custom furniture layouts.

