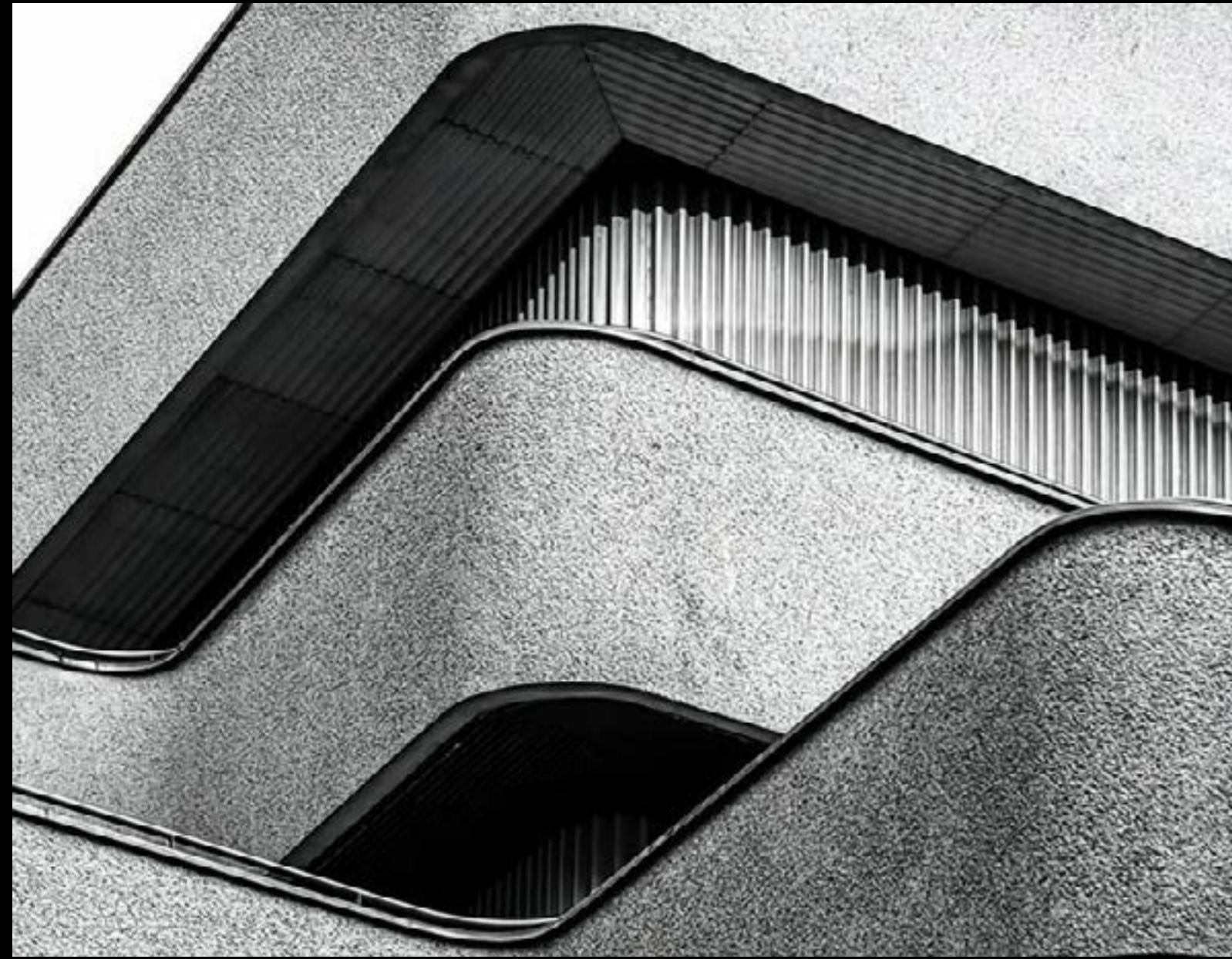




CO DINING SET





THE CO CHAIR WAS DESIGNED TO BE SOFT, WARM, AND INVITING. PROVIDING UNCONVENTIONAL COMFORT, THE CHAIR AIMS TO ENCOURAGE VULNERABILITY AND DEEP CONNECTIONS WITH CLOSE FAMILY AND FRIENDS WITH ITS LOW BACK AT THE DINNER TABLE. THE LOW BACK REMOVES TRADITIONAL TABLE HIERARCHY TO ENSURE ALL FEEL OPEN. IT ALSO ENCOURAGES ACTIVE ENGAGEMENT IN CONVERSATION, REMOVING THE OPTION TO WITHDRAW FROM CONNECTIVE CONVERSATIONS.

